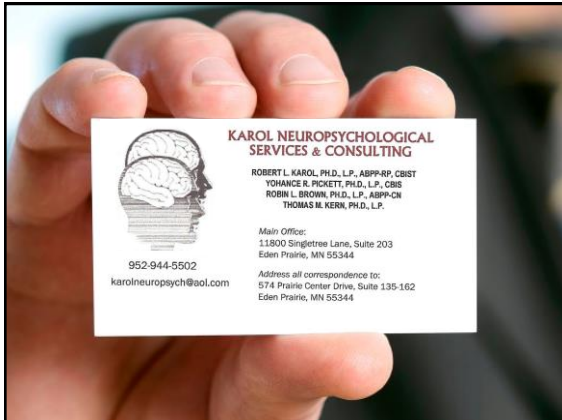


ROBERT L. KAROL, PH.D., L.P., ABPP, CBIST



**CONCEPTUALIZING
DISABILITY:
TBI, ABI, AND BEYOND**

ALL SLIDES © KAROL 2017





NO
AUDIO OR VIDEO RECORDING
OR
COPYING/REPRODUCTION/PHOTOS
OF SLIDES/HANDOUTS

THANK YOU

- [1] Explain factors that make coping with acquired brain injury challenging
- [2] Describe a model for conceptualizing disability
- [3] Understand how to address response to disability



HEALTHCARE
SYSTEM
CONSIDERATIONS

FRUSTRATION WITH INSURERS & PROVIDERS



CARE MODELS

DR. KILDARE

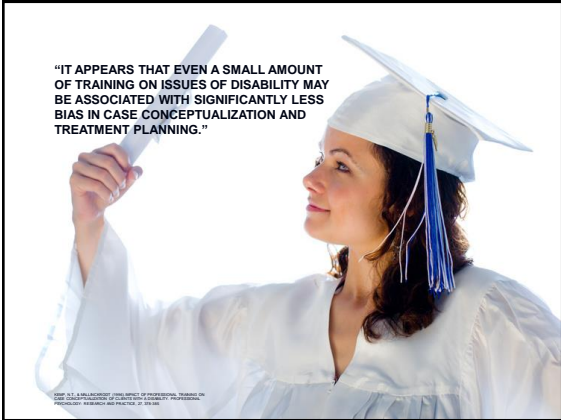
MARCUS WELBY, M.D.

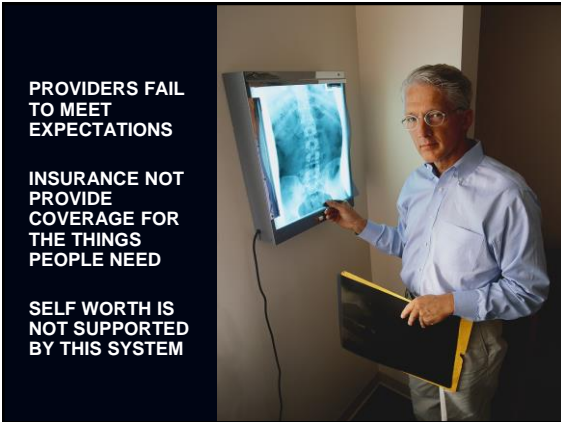
HAWKEYE PIERCE

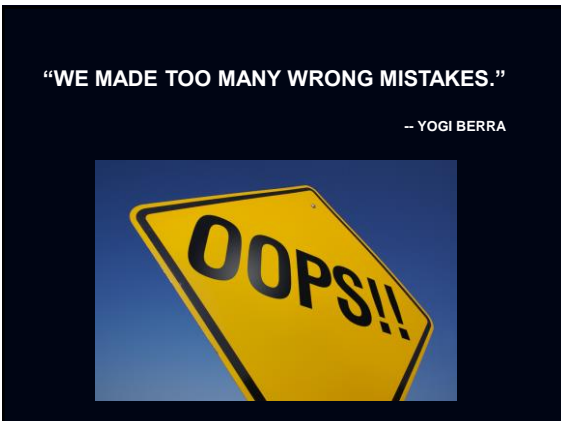
DR. Mc DREAMY

INSTEAD...

**OR THIS
!!!**

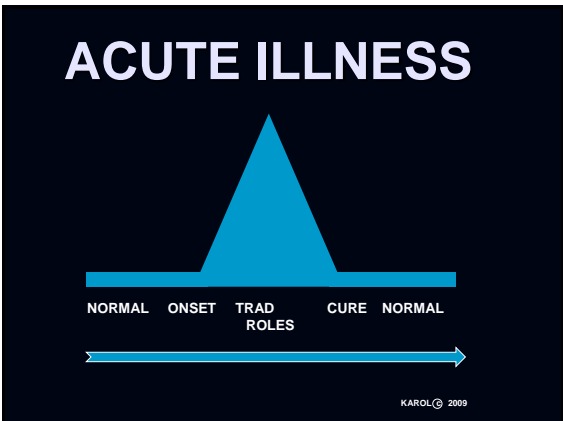




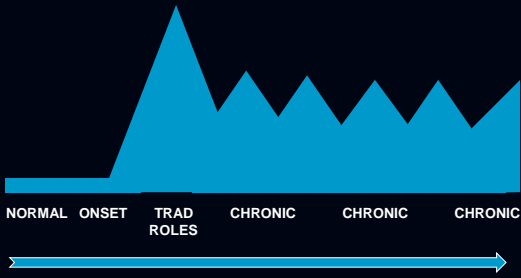








CHRONIC ILLNESS



KAROL © 2009

SOCIETY DOES NOT PREPARE PEOPLE FOR CHRONIC CHANGES



REHABILITATION
GOAL

FACILITATE
FUNCTIONING,
NOT CURE INJURY



HEMER & KAROL, 2010
OVERCOMING GRIEF AND LOSS AFTER BRAIN INJURY

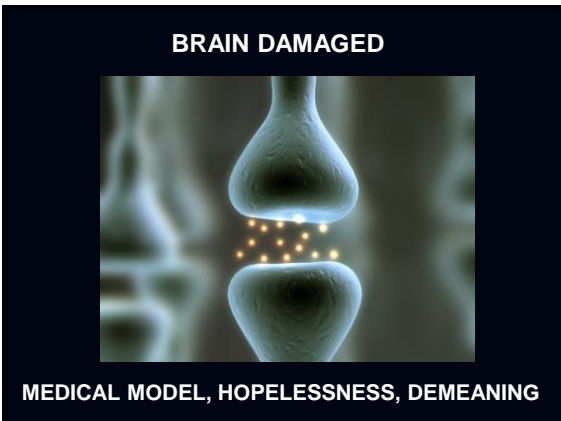










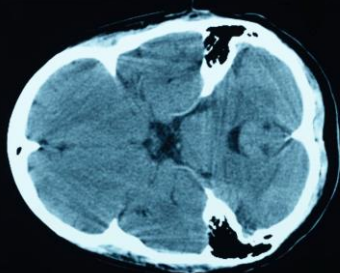


HEAD INJURY



LESS OFFENSIVE, SCALP WOUND PERCEPTION

BRAIN INJURED

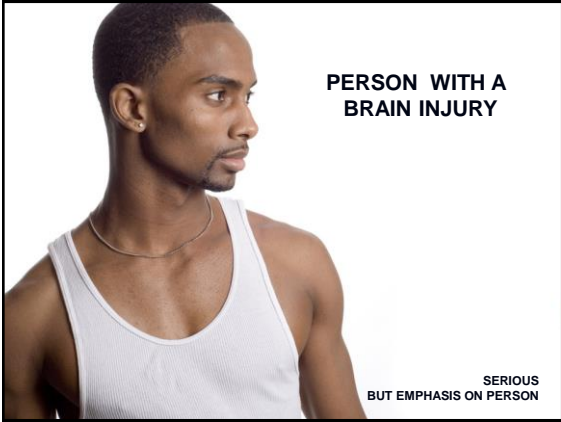


NOT SCALP WOUND, STILL PEJORATIVE

SURVIVOR OF BRAIN INJURY



**HOPE, COURAGE, ACCOMPLISHMENT
INCLUDED SERIOUSNESS
PERSON IS THE INJURY**



**PERSON WITH A
BRAIN INJURY**

**SERIOUS
BUT EMPHASIS ON PERSON**



YOU ARE...

**DIABETIC
PARAPLEGIC
AUTISTIC**

OR...

CANCER SURVIVOR



**YOU ARE A PERSON
WITH...**

**DIABETES
PARAPLEGIA
AUTISM
INTELLECTUAL
DISABILITY
DEVELOPMENTAL
DISABILITY**

OR A PERSON WHO...

SURVIVED CANCER







International Classification of Functioning, Disability and Health (ICF)

■ "The International Classification of Functioning, Disability and Health, known more commonly as ICF, is a classification of health and health-related domains. These domains are classified from body, individual and societal perspectives by means of two lists: a list of body functions and structure, and a list of domains of activity and participation. Since an individual's functioning and disability occurs in a context, the ICF also includes a list of environmental factors."



ACTIVITY LIMITATIONS AND PARTICIPATION RESTRICTION



ACTIVITY

ACTIVITY IS THE EXECUTION OF A TASK OR ACTION BY AN INDIVIDUAL.

ACTIVITY LIMITATIONS ARE DIFFICULTIES AN INDIVIDUAL MAY HAVE IN EXECUTING ACTIVITIES.

PARTICIPATION

PARTICIPATION IS INVOLVEMENT IN A LIFE SITUATION.

PARTICIPATION RESTRICTIONS ARE PROBLEMS AN INDIVIDUAL MAY HAVE IN INVOLVEMENT IN LIFE SITUATIONS.

EXAMPLES: LISTENING, PROBLEM SOLVING, INTERPERSONAL RELATIONSHIPS, COMMUNITY AND SOCIAL LIFE

ENVIRONMENTAL FACTORS MAKE UP THE PHYSICAL, SOCIAL AND ATTITUDINAL ENVIRONMENT IN WHICH PEOPLE LIVE AND CONDUCT THEIR LIVES.

INCLUDES TECHNOLOGY, CLIMATE/LIGHT/SOUND, SUPPORT/RELATIONSHIPS, ATTITUDES, SERVICES/SYSTEMS/POLICIES



**CONTEXTUAL FACTORS:
PERSONAL**



**PERSONAL FACTORS AS THEY
IMPACT ON FUNCTIONING**
EXAMPLES: LIFESTYLE, HABITS, SOCIAL BACKGROUND,
EDUCATION, LIFE EVENTS, RACE/ETHNICITY,
SEXUAL ORIENTATION AND ASSETS OF THE INDIVIDUAL



**GOALS
AND
INDEPENDENCE**

SOCIETAL VIEW



**VALUING PEOPLE FOR WHO THEY ARE,
NOT FOR THEIR ACCOMPLISHMENTS**

"INTER-RELIANCE" IS THE NORM

EVERYONE NEEDS HELP



SELF-SUFFICIENCY : MYTH

KAROL (2003) NEUROPSYCHOSOCIAL INTERVENTION: THE PRACTICAL TREATMENT OF SEVERE BEHAVIORAL DYSCONTROL AFTER ACQUIRED BRAININJURY. WWW.CRCPRESS.COM

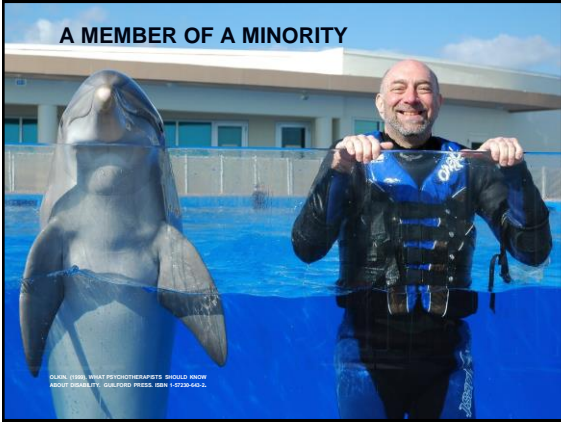


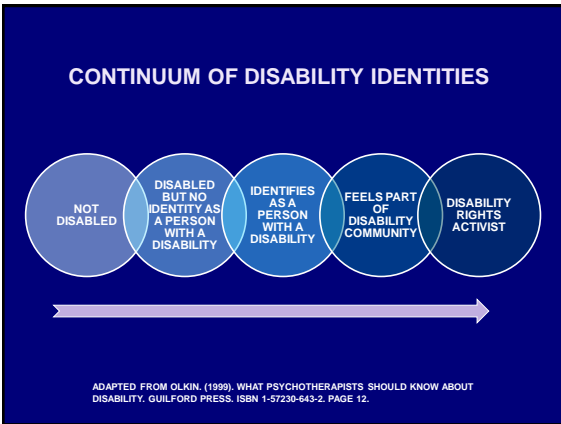
SELF IDENTITY

**RETHINKING THE
DISABILITY IDENTITY**

WHO AM I?



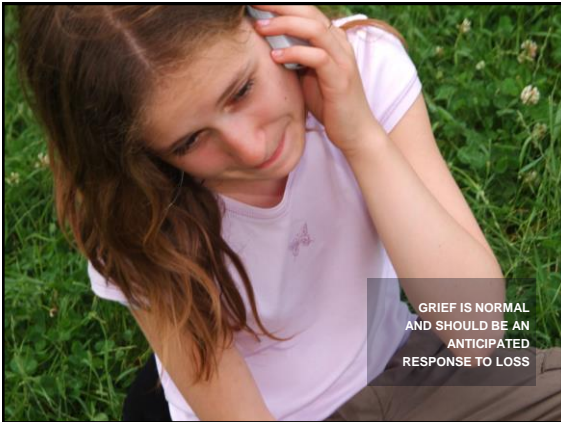




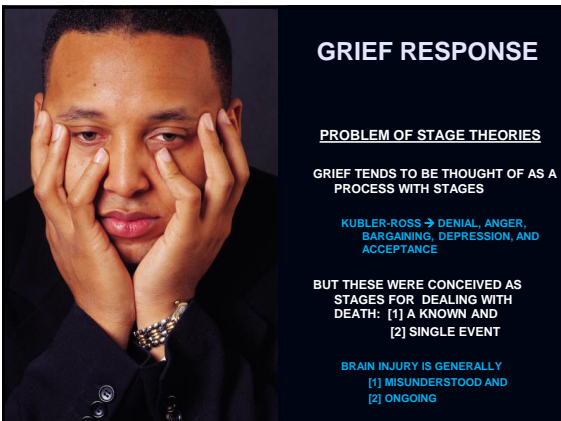




GRIEF AND ACCEPTANCE



GRIEF IS NORMAL
AND SHOULD BE AN
ANTICIPATED
RESPONSE TO LOSS



GRIEF RESPONSE

PROBLEM OF STAGE THEORIES

GRIEF TENDS TO BE THOUGHT OF AS A PROCESS WITH STAGES

KUBLER-ROSS → DENIAL, ANGER, BARGAINING, DEPRESSION, AND ACCEPTANCE

BUT THESE WERE CONCEIVED AS STAGES FOR DEALING WITH DEATH: [1] A KNOWN AND [2] SINGLE EVENT

BRAIN INJURY IS GENERALLY [1] MISUNDERSTOOD AND [2] ONGOING

PERSONAL SYSTEM IS IMPORTANT
UNLIKE DEATH, NO TWO INJURIES ARE ALIKE
PERSON AND FAMILY HAVE PERCEPTION OF INJURY THAT IS OFTEN CRUCIAL

MOBILE MOURNING

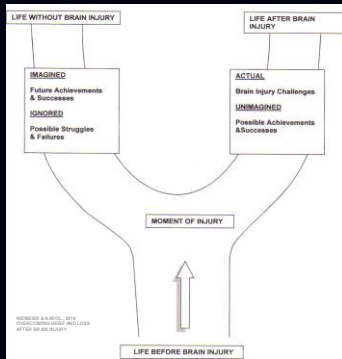
UNCERTAINTY IS CENTRAL CONCEPT
EVERYTHING CONTINUES TO SHIFT,
EVEN OVER YEARS

EASY TO GET LEARNED
HELPLESSNESS OVERTIME, SINCE
DON'T DIE AND DON'T GET CURED



See MJR, HAFNEY, 1984

Departure of Life Paths



Overcoming
Grief and Loss
After Brain Injury



Janet P. Niemeier, PhD, ABPP
Robert L. Karol, PhD, ABPP

Therapists' Guide
to Overcoming
Grief and Loss
After Brain Injury



Janet P. Niemeier
Robert L. Karol

WWW.OUP.COM

ACCEPTANCE

NOT BOTHERED
INJURY IS NOT A MAJOR CONCERN

HATE IT
INJURY IS AWFUL, BUT NOT GOING AWAY BECAUSE THEY HATE IT
SO... HATE IT IF THEY WANT
AND BE EFFECTIVE



LEGAL CONTEXT



LEGAL VIEW

INCREASE IN LEGAL PROTECTIONS



PHOTO KAROL
COPYRIGHT 2011



1975 EDUCATION FOR ALL HANDICAPPED CHILDREN
 [REAUTHORIZED AS INDIVIDUALS WITH DISABILITIES EDUCATION ACT (IDEA)]

- DUE PROCESS, PARENTAL RIGHTS, IEPs, NO COST SPECIAL ED

AMENDMENTS TO THE 1943 VOCATIONAL REHABILITATION ACT

- BROADENED REHABILITATION

1977 REHABILITATION ACT

- EMPLOYMENT NON DISCRIMINATION
- EQUAL ACCESS PROGRAMS, SERVICES, EDUCATION

1990 AMERICANS WITH DISABILITIES ACT

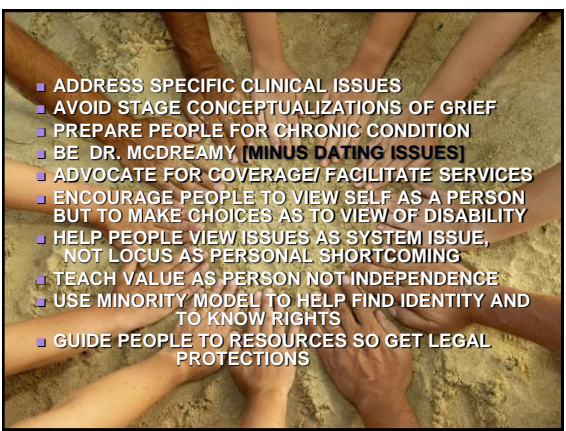
- ADDRESSES EMPLOYMENT, TRANSPORTATION, PUBLIC FACILITY, TELECOMMUNICATION DISCRIMINATION
- INCLUDES HOTELS, RESTAURANTS, MOVIE THEATERS, STORES, OFFICES, ZOO/S/PARKS, SCHOOLS, RECREATIONAL PLACES, GALLERIES, MUSEUMS, ETC.

1999 OLIMSTEAD SUPREME COURT DECISION

- REQUIRED SERVICES IN "MOST INTEGRATED SETTING APPROPRIATE TO THE NEEDS"

2008 ADA AMENDMENTS ACT (ADAAA)

- STRENGTHENS DISABILITY DEFINITION
- MITIGATING FACTORS DO NOT DISMISS DISABILITY (E.G., INSULIN FOR DIABETES)
- STILL DISABILITY EVEN IF IN REMISSION
- EXAMPLES OF MAJOR ACTIVITIES
- STRENGTHENS "REGARDED AS"



- ADDRESS SPECIFIC CLINICAL ISSUES
- AVOID STAGE CONCEPTUALIZATIONS OF GRIEF
- PREPARE PEOPLE FOR CHRONIC CONDITION
- BE DR. MCDREAMY, [MINUS DATING ISSUES]
- ADVOCATE FOR COVERAGE/ FACILITATE SERVICES
- ENCOURAGE PEOPLE TO VIEW SELF AS A PERSON BUT TO MAKE CHOICES AS TO VIEW OF DISABILITY
- HELP PEOPLE VIEW ISSUES AS SYSTEM ISSUE, NOT LOCUS AS PERSONAL SHORTCOMING
- TEACH VALUE AS PERSON NOT INDEPENDENCE
- USE MINORITY MODEL TO HELP FIND IDENTITY AND TO KNOW RIGHTS
- GUIDE PEOPLE TO RESOURCES SO GET LEGAL PROTECTIONS



EVERY PERSON I SEE WHO HAS A BRAIN INJURY HAS MORE ABILITY THAN THEY SHOW THE FIRST TIME I SEE THEM.

PHOTO KAROL, COPYRIGHT 2010